

# Solid Rigid Couplings

## RC / RC-KW



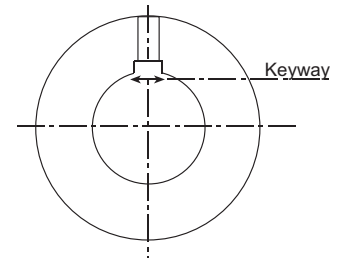
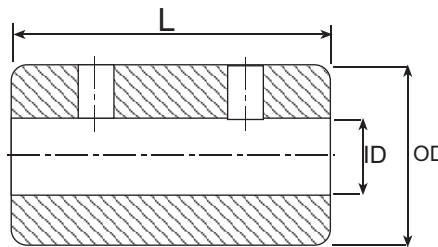
RBL Rigid Coupling "No Keyway"	RBL Rigid Coupling "With Keyway"	Bore "B"	O.D. "D"	Length "L"	SET SCREW SIZE
RC 025	RC 025-KW	1/4	1/2	3/4	10-32 X 1/8
RC 031	RC 031-KW	5/16	5/8	1	10-32 X 1/8
RC 037	RC 037-KW	3/8	3/4	1	1/4-20 X 3/16
RC 050	RC 050-KW	1/2	1	1-1/2	1/4-20 X 1/4
RC 062	RC 062-KW	5/8	1-1/4	2	5/16-18 X 1/4
RC 075	RC 075-KW	3/4	1-1/2	2	5/16-18 X 5/16
RC 087	RC 087-KW	7/8	1-3/4	2	5/16-18 X 5/16
RC 100	RC 100-KW	1	2	3	3/8-16 X 3/8
RC 112	RC 112-KW	1-1/8	2-1/8	3	3/8-16 X 3/8
RC 125	RC 125-KW	1-1/4	2-1/4	4	3/8-16 X 3/8

### Standard Tolerance

Dimensions	Tolerances
Bore 1/8" - 7/8"	+0.001 - +.003
Bore 1" - 1-1/4"	+0.001 - +.004

### Product Data

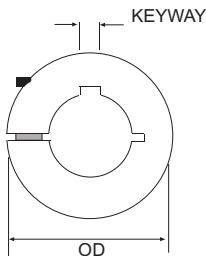
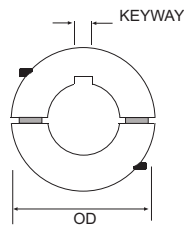
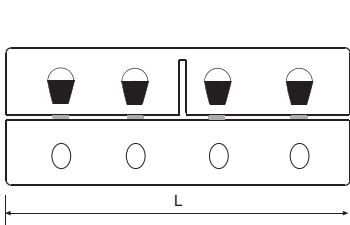
	Bore range 1/4" to 1-1/4"
Carbon Steel	Alloy cap screw
	Mild Steel-Black oxide finish



## Split Rigid Couplings

### 1RC-KW / 2RC-KW

RBL Rigid Coupling "1 Pc Split"	RBL Rigid Coupling "2 Pc Split"	Bore "B"	O.D. "D"	Length "L"	CAP SCREW SIZE
1 RC 025-KW	2 RC 025-KW	1/4	1/2	3/4	4-40 X 3/8
1 RC 031-KW	2 RC 031-KW	5/16	5/8	1	4-40 X 3/8
1 RC 037-KW	2 RC 037-KW	3/8	3/4	1	6-32 X 3/8
1 RC 050-KW	2 RC 050-KW	1/2	1	1-1/2	8-32 X 1/2
1 RC 062-KW	2 RC 062-KW	5/8	1-1/4	2	10-32 X 1/2
1 RC 075-KW	2 RC 075-KW	3/4	1-1/2	2	1/4-28 X 5/8
1 RC 087-KW	2 RC 087-KW	7/8	1-3/4	2	1/4-28 X 5/8
1 RC 100-KW	2 RC 100-KW	1	2	3	1/4-28 X 5/8
1 RC 112-KW	2 RC 112-KW	1-1/8	2-1/8	3	1/4-28 X 5/8
1 RC 125-KW	2 RC 125-KW	1-1/4	2-1/4	4	1/4-28 X 3/4



### Standard Tolerance

Dimensions	Tolerances
Bore 1/8" - 7/8"	+0.001 - +.003
Bore 1" - 1-1/4"	+0.001 - +.004

### Product Data

	Bore range 1/4" to 1-1/4"
Carbon Steel	Alloy cap screw
	Mild Steel-Black oxide finish

